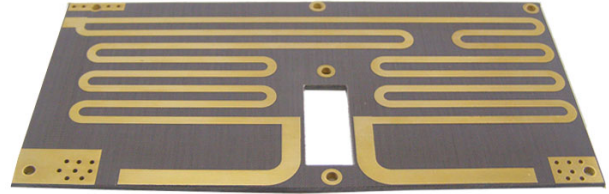


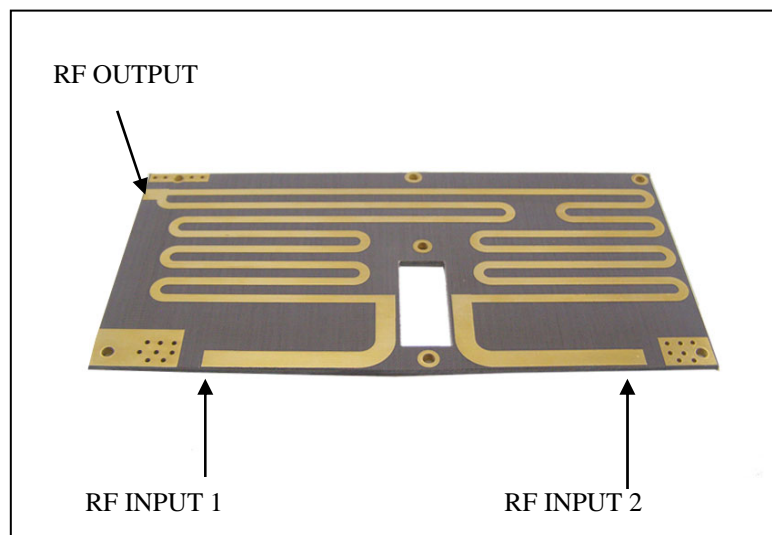
2 ways 1500W FM Combiner

The **2CB1500-FM** designed for FM radio transmitter. For two way combiner.

- 87.5 – 108 MHz
- 2 ways Combiner
- Teflon laminate 2.4 mm thickness
- Gold plate
- Input/Output 50 ohm
- Power rating: 1500 Watt
- Accepts for resistor 500 watt 100 ohm
- Weight 0.1 kg



Electrical Connection



Dimensions (L x W x H) : 86 x 175 x 3 mm